

Travelling by car

Over the A5 (Basel-Karlsruhe-Kassel)

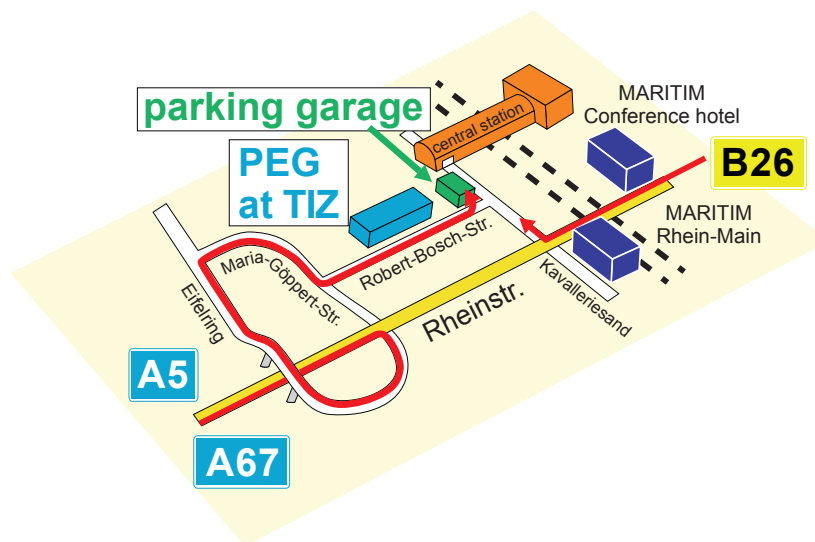
Leave the freeway A5 at exit number 26 and drive along the Rheinstraße/A672 direction Darmstadt/Stadtmitte (center)/Griesheim.

Over the A67 (Mannheim - Mainz)

Leave the freeway A67 at exit 6 and drive along the Rheinstraße/A672 direction Darmstadt/Stadtmitte (center)/Griesheim.

In Darmstadt

Please take the double-lane feeder road (Rheinstraße/A672) from the Darmstädter Kreuz direction Innenstadt (center)/Aschaffenburg/B26. After an easy double curve you under run a bridge and turn sharply right into the Eifelring (note: guide TIZ). Follow the road past the bridge and then turn right into Maria-Göppert-Straße. After approximately 250 meters turn left into Robert-Bosch-Strasse and find the TIZ behind the ESOC compound to the left. You can find the car park at the end of the road on the left hand side.



Over the B45/B26 (Hanau/Aschaffenburg)

At the Hanauer Kreuz turn off in direction B45-Dieburg. Follow the double-lane highway direction Darmstadt. After approx. 20 km leave the B45 and drive on to the B26. When you enter Darmstadt, please follow the guide to the freeways A5/A67 (Darmstädter Kreuz).

In Darmstadt

Please take the double-lane Rheinstrasse direction freeway Basel/Hannover. After you have left the city at the level of the Martitim Hotel, get in lane to turn right. After 100 meters, turn right into Zweifalltorweg. After 200 meters turn left into Robert-Bosch-Strasse and immediately right into the car parking.

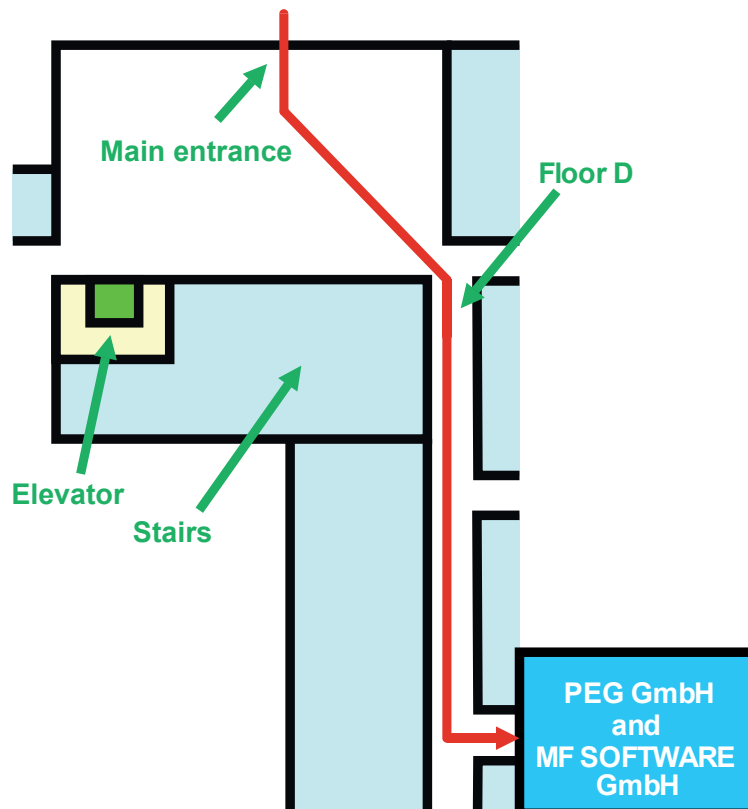
Travelling by car

From the car parking to TIZ building

After leaving the car park turn right and follow the Robert-Bosch-Strasse until you reach the main entrance of the TIZ.

How to find us in the building

You can find us on the ground floor in hall D on the left side.

**Kontakt:**

Sven Theissen (Dipl.-Ing.)
Tel.: +49 (0)6151 / 8504 020
Email: theissen@pe-group.de

Thomas Wittmann (Dipl.-Ing.)
Tel.: +49 (0)6151 / 8504 010
Email: wittmann@pe-group.de